

BOX SCORE: *** FINAL ***

Date: 03-16-88 Site: STATE TOURNEY, LOUISVILLE Attendance:

Team: Laurel County

NO.	NAME	TOTAL FG		3-POINT		FT	FTA	REB				PF	TP	A	TO	BLK	S	MIN
		FG	FGA	FG	FGA			O	D	T	TI							
34	Hill, Tim	10	17	0	0	3	6	2	4	6	1	23	0	1	0	0	31	
41	Profitt, Tim	7	14	3	5	2	3	8	1	9	3	19	0	1	0	0	31	
55	Daley, Mark	2	4	0	0	0	0	1	1	2	2	4	1	0	0	0	22	
12	Williams, Glenn	1	9	0	3	0	0	0	2	2	1	2	1	8	0	0	31	
14	Elza, Kyle	0	9	0	4	2	2	2	0	2	4	2	4	3	0	1	31	
51	Douglas, Kent	1	4	0	1	1	1	3	2	5	1	3	2	3	0	0	10	
10	Broughton, Chas	0	1	0	0	0	0	0	1	1	0	0	0	1	0	0	1	
53	Murray, Brian	0	0	0	0	2	2	0	1	1	0	2	0	0	0	0	1	
30	Coffey, Miguel	0	0	0	0	0	0	0	0	0	0	0	0	0	0	0	1	
35	Brown, Brian	0	0	0	0	0	0	0	0	0	1	0	0	0	0	0	1	
TEAM																		
TOTALS		21	58	3	13	10	14	16	13	29	13	55	8	17	0	1	160	

Percentages:	Game	FG	21/ 58	36.2%	3-PT.	3/ 13	23.1%	FT	10/ 14	71.4%
Period 1	1	4/ 9	44.4%	2/ 2	100.0%	0/ 0	0.0%			
Period 2	2	3/ 13	23.1%	1/ 1	100.0%	1/ 2	50.0%			
Period 3	3	8/ 14	57.1%	0/ 3	0.0%	1/ 1	100.0%			
Period 4	4	6/ 22	27.3%	0/ 7	0.0%	8/ 11	72.7%			

Team: Ballard

NO.	NAME	TOTAL FG		3-POINT		FT	FTA	REB				PF	TP	A	TO	BLK	S	MIN
		FG	FGA	FG	FGA			O	D	T	TI							
11	McDeffie, Eric	2	4	1	1	2	2	0	3	3	1	7	1	3	0	2	29	
21	Martin, Kenneth	4	11	0	0	3	3	5	7	12	4	11	1	4	0	0	28	
45	Gathright, Eric	0	3	0	0	0	0	2	5	7	3	0	0	2	0	0	26	
10	Bell, Mark	7	11	0	0	3	4	1	1	2	1	17	1	4	0	4	29	
20	Houston, Allen	11	14	4	5	3	3	1	6	7	3	29	1	2	0	1	30	
34	Baxter, Matt	0	1	0	0	0	0	0	0	0	1	0	1	2	0	0	7	
15	Howard, Todd	1	2	0	0	2	2	0	0	0	0	4	0	0	0	0	2	
25	McDuffie, Chas	0	0	0	0	0	0	0	1	1	0	0	0	1	0	0	6	
33	Gardner, Scott	2	2	0	0	1	2	1	0	1	0	5	0	0	0	0	1	
24	Brown, Kevin	0	0	0	0	0	0	0	0	0	0	0	0	0	0	0	1	
32	Fasoldt, Creed	0	0	0	0	0	0	0	0	0	0	0	0	0	0	0	1	
41	Spencer, Theo	0	1	0	0	0	0	1	0	1	1	0	0	0	0	0	0	
TEAM																		
TOTALS		27	49	5	6	14	16	11	24	35	14	73	5	18	0	7	160	

Percentages:	Game	FG	27/ 49	55.1%	3-PT.	5/ 6	83.3%	FT	14/ 16	87.5%
Period 1	1	7/ 14	50.0%	0/ 1	0.0%	1/ 2	50.0%			
Period 2	2	8/ 10	80.0%	5/ 5	100.0%	3/ 3	100.0%			
Period 3	3	7/ 15	46.7%	0/ 0	0.0%	0/ 0	0.0%			
Period 4	4	5/ 10	50.0%	0/ 0	0.0%	10/ 11	90.9%			

OFFICIALS: RANDALL CURRY, BARRY BARNES
 Technicals: None

SCORE BY PERIODS					
Laurel County	10	8	17	20	= 55
Ballard	15	24	14	20	= 73

Player	Team	Ballard	Time	Score	Laurel County	Player	Team
1	9	Sub In: Houston, Allen Out: McDuffie, Chas Foul on McDeffie, Eric	4 1:53				
			4 1:50				
			4 1:50	63-49*	Profitt, Tim, 1 & Bonus made both	2-3	66.6% 6-10 60.0%
			4 1:25		Foul on Elza, Kyle	4	7
1-2	50.0%	11-12 91.6%	4 1:17	*68-49			
2-3	66.6%	12-13 92.3%	4 1:11	68-49*			
2	7	Steal by Bell, Mark	4 1:18				
			4 1:18		Dribbling Error on Williams, Glenn	8	17
7-11	63.6%	25-45 55.5%	4 1:18	*67-49			
			4 1:17		Foul on Daley, Mark	2	8
		Sub In: Baxter, Matt Out: Gathright, Eric	4 1:17				
		Sub In: McDuffie, Chas Out: Martin, Kenneth	4 1:17				
		Sub In: Gardner, Scott Out: Houston, Allen	4 1:17				
		Sub In: Brown, Kevin Out: McDeffie, Eric	4 1:17				
3-4	75.0%	13-14 92.8%	4 1:17	*68-49			
		Bell, Mark, 1 Free Throw made	4 1:11		3 pt 21 ft Left Angle Jump shot by Elza, Kyle, missed	0-9	00.0% 20-55 36.3%
D-2	Tot-2	D-9 Tot-33	4 1:08				
1-1	100%	26-46 56.5%	4 0:58	*70-49			
1	5	0 ft Lane Bank by Gardner, Scott, made Assist by Baxter, Matt	4 0:52				
		Sub In: Fasoldt, Creed Out: Bell, Mark	4 0:52		3 pt 22 ft Left Side Jump shot by Williams, Glenn, missed	1-8	12.5% 20-56 35.7%
			4 0:44		Rebound by Daley, Mark	0-1	Tot-1 0-9 Tot-27
			4 0:44	70-51*	4 ft Lane Jump shot by Daley, Mark, made	2-4	50.0% 21-57 36.8%
2-2	100%	27-47 57.4%	4 0:30	*72-51			
		16 ft Right Base Line Jump shot by Gardner, Scott, made	4 0:20		3 pt 22 ft Straight Away Jump shot by Williams, Glenn, missed	1-9	11.1% 21-58 36.2%
			4 0:18		Rebound by Elza, Kyle	0-2	Tot-2 0-10 Tot-28
1	10	Foul on Baxter, Matt	4 0:18				
		Sub In: Spencer, Theo Out: McDuffie, Chas	4 0:18				
			4 0:18		Assist by Elza, Kyle	4	8
			4 0:18		Subs In: Broughton, Chas, Murray, Brian, Coffey, Miguel, Brown, Brian		
			4 0:02	73-53*	Out: Williams, Glenn, Hill, Tim, Profitt, Tim, Daley, Mark		
			4 0:18		Elza, Kyle, 1 & Bonus made both	1-1	100% 7-11 63.6%
			4 0:10		Sub In: Taylor, Doyle Out: Elza, Kyle		
0-1	00.0%	27-48 56.2%	4 0:09		Foul on Brown, Brian	1	9
0-1	Tot-1	0-2 Tot-34	4 0:09				
		Rebound by Gardner, Scott	4 0:02	73-55*	Elza, Kyle, 1 & Bonus made both	2-2	100% 8-12 66.6%
1-2	50.0%	14-16 87.5%	4 0:09	*73-53			
0-1	Tot-1	0-3 Tot-35	4 0:03				
0-1	00.0%	27-49 55.1%	4 0:03				
		7 ft Lane Jump shot by Spencer, Theo, missed	4 0:02		Rebound by Murray, Brian	D-1	Tot-1 D-3 Tot-29
1	11	Foul on Spencer, Theo	4 0:02				
			4 0:02	73-55*	Murray, Brian, 1 & Bonus made both	2-2	100% 10-14 71.4%

REB: 35 A: 5 BLK: 0 TD: 18 PF: 11
S: 7 FT: 14-16 87.5% FG: 27-49 55.1%

No. 1 Ballard TIME - O U T

REB: 29 A: 8 BLK: 0 TD: 17 PF: 9
S: 1 FT: 10-14 71.4% FG: 21-58 36.2%

Player	Team	Ballard	Time	Score	Laurel County	Player	Team
		Sub In: Bell, Mark Out: McDuffie, Chas	4	5:00			
2	14	Bad Pass by McDeffie, Eric	4	5:00	Steal by Elza, Kyle	1	1
D-1	Tot-1	Rebound by McDeffie, Eric	4	4:49			
0-3	00.0%	2 ft Lane Jump shot by Gathright, Eric, missed	4	4:47	2 ft Lane Jump shot by Elza, Kyle, missed	0-7	00.0% 17-46 36.9%
		Foul on Martin, Kenneth	4	4:45			
		Sub In: McDuffie, Chas Out: Martin, Kenneth	4	4:35			
			4	4:34	Rebound by Profitt, Tim	D-1	Tot-3 D-1 Tot-21
D-1	Tot-1	Rebound by Houston, Allen	4	4:34	Profitt, Tim, 1 & Bonus missed 1st	0-1	00.0% 4-8 50.0%
2-4	50.0%	18 ft Left Angle Jump shot by McDeffie, Eric, missed	4	4:34			
D-1	Tot-3	Rebound by Gathright, Eric	4	4:32			
2	0-1	Bad Pass by Gathright, Eric	4	4:24			
		Sub In: McDuffie, Chas Out: Martin, Kenneth	4	4:19			
11-14	78.5%	4 ft Lane Alley Oop by Houston, Allen, made	4	4:13	59-43* 12 ft Lane Jump shot by Hill, Tim, made	9-14	64.2% 18-47 38.2%
1	24-43	Assist by McDeffie, Eric	4	3:51	*61-43		
			4	3:37	3 pt 18 ft Circle Jump shot by Douglas, Kent, missed	1-4	25.0% 18-48 37.5%
			4	3:33	Rebound by Profitt, Tim	0-3	Tot-4 0-5 Tot-22
			4	3:33	61-45* 2 ft Lane Follow by Profitt, Tim, made	7-14	50.0% 19-49 38.7%
4	16	Dribbling Error on Bell, Mark	4	3:26			
			4	3:17	6 ft Left Base Line Jump shot by Williams, Glenn, missed	1-7	14.2% 19-50 38.0%
			4	3:14	Rebound by Douglas, Kent	0-3	Tot-3 0-6 Tot-23
1	5	Steal by Bell, Mark	4	3:12			
6-10	60.0%	2 ft Lane Driving by Bell, Mark, missed	4	3:11	Traveling Violation on Douglas, Kent	2	15
		Sub In: Martin, Kenneth Out: Houston, Allen	4	3:09			
		Steal by McDeffie, Eric	4	3:08	Rebound by Douglas, Kent	D-1	Tot-4 D-2 Tot-24
3	17	Traveling Violation on McDeffie, Eric	4	3:07			
			4	2:55	Bad Pass by Douglas, Kent	3	16
D-2	Tot-2	Rebound by McDeffie, Eric	4	2:44			
			4	2:42	18 ft Right Base Line Jump shot by Hill, Tim, missed	9-15	60.0% 19-51 37.2%
2-2	100%	McDeffie, Eric, 1 & Bonus made both	4	2:27			
			4	2:19	Foul on Douglas, Kent	1	6
			4	2:19	Sub In: Daley, Mark Out: Douglas, Kent		
			4	2:19	*63-45		
			4	2:16	3 pt 20 ft Left Side Jump shot by Elza, Kyle, missed	0-8	00.0% 19-52 36.5%
			4	2:08	Rebound by Hill, Tim	0-1	Tot-1 0-7 Tot-25
			4	2:08	10 ft Left Base Line Jump shot by Hill, Tim, missed	9-15	56.2% 19-53 35.8%
			4	2:06	Rebound by Elza, Kyle	0-1	Tot-1 0-8 Tot-26
			4	2:00	63-47* 16 ft Right Angle Jump shot by Hill, Tim, made	10-17	58.8% 20-54 37.0%
					Assist by Elza, Kyle	3	7
		REB: 32 A: 4 BLK: 0 TD: 17 PF: 8	4	2:00	REB: 26 A: 7 BLK: 0 TD: 16 PF: 6		
		S: 6 FT: 10-11 90.9% FG: 24-44 54.5%			S: 1 FT: 4-8 50.0% FG: 20-54 37.0%		
		T I M E - O U T Laurel County No. 2					
2	18	Traveling Violation on Houston, Allen	4	1:57			

Laurel County "Cardinals" vs Ballard "Bruins"
2nd Half Play by Play

PAGE : 2

Tip off at on 03/16/88 at STATE TOURNEY, LOUISVILLE
Produced by the K.H.S.A.A. Stat Crew with FINAL III**

Player	Team	Ballard	Time	Score	Laurel County	Player	Team
McDeffie, Eric	Martin, Kenneth	Gathright, Eric, Bell, Mark, Houston, Allen			Hill, Tim, Profitt, Tim, Elza, Kyle, Williams, Glenn, Douglas, Kent		
		Ball to Bruins	4 7:51				
		Sub In: Baxter, Matt Out: Gathright, Eric	4 7:47		Foul on Profitt, Tim	3	3
3-3	100% 6-7	85.7% Houston, Allen, 2 Free Throws made both	4 7:47	*55-35			
			4 7:38		3 pt 23 ft Left Side Jump shot by Profitt, Tim, missed	5-10	50.0% 15-37 40.5%
D-1	Tot-1	D-1 Tot-24	4 7:36				
2		9 Rebound by Martin, Kenneth	4 7:31				
		Bad Pass by Martin, Kenneth	4 7:26		17 ft Right Angle Jump shot by Profitt, Tim, missed	5-11	45.4% 15-38 39.4%
			4 7:24		Rebound by Profitt, Tim	0-1	Tot-1 0-1 Tot-17
			4 7:24	55-37*	4 ft Lane Jump shot by Profitt, Tim, made	6-12	50.0% 16-39 41.0%
			4 7:13		Foul on Elza, Kyle	3	4
3		5 Foul on Martin, Kenneth	4 7:07				
3		10 Bad Pass by Martin, Kenneth	4 7:07				
			4 6:57	55-39*	2 ft Lane Bank by Hill, Tim, made Assist by Elza, Kyle	8-11	72.7% 17-40 42.5%
1-2	50.0% 23-40	57.5% 12 ft Left Side Jump shot by Howard, Todd, made	4 6:48	*57-39		2	6
			4 6:41		Dribbling Error on Elza, Kyle	3	14
4		11 Dribbling Error on Martin, Kenneth	4 6:38				
		Sub In: McDuffie, Chas Out: McDeffie, Eric	4 6:38				
		Sub In: McDeffie, Eric Out: Bell, Mark	4 6:38				
			4 6:38		3 pt 21 ft Left Side Jump shot by Elza, Kyle, missed	0-6	00.0% 17-41 41.4%
			4 6:17		Rebound by Douglas, Kent	0-1	Tot-1 0-2 Tot-18
		Sub In: Howard, Todd Out: Martin, Kenneth	4 6:13				
2		6 Foul on Houston, Allen	4 6:13				
		Sub In: Gathright, Eric Out: Baxter, Matt	4 6:13				
D-1	Tot-1	D-2 Tot-25	4 6:13	57-40*	Hill, Tim, 2 Free Throws made 1st missed 2nd	2-4	50.0% 3-5 60.0%
1		12 Rebound by Gathright, Eric	4 6:11				
		Bad Pass by McDuffie, Chas	4 6:07				
			4 5:56		10 ft Lane Turnaround by Hill, Tim, missed	8-12	66.6% 17-42 40.4%
D-1	Tot-1	D-3 Tot-26	4 5:55				
1		13 Rebound by McDuffie, Chas	4 5:51				
3		7 Out-of-Bounds by McDeffie, Eric	4 5:32		57-41* Hill, Tim, 2 Free Throws made 1st missed 2nd	3-6	50.0% 4-7 57.1%
		Foul on Houston, Allen	4 5:30		Rebound by Douglas, Kent	0-2	Tot-2 0-3 Tot-19
			4 5:25		8 ft Left Base Line Jump shot by Profitt, Tim, missed	6-13	46.1% 17-43 39.5%
D-2	Tot-2	D-4 Tot-27	4 5:24				
		Rebound by Gathright, Eric	4 5:21		Foul on Williams, Glenn	1	5
			4 5:21				
		REB: 27 A: 3 BLK: 0 TD: 13 PF: 7			REB: 19 A: 6 BLK: 0 TD: 14 PF: 5		
		S: 4 FT: 6-7 85.7% FG: 23-40 57.5%		T I M E - O U T Laurel County No. 1	S: 0 FT: 4-7 57.1% FG: 17-43 39.5%		
2-2	100% 8-9	88.8% Howard, Todd, 1 & Bonus made both	4 5:21	*59-41			
			4 5:06		23 ft Right Angle Jump shot by Hill, Tim, missed	8-13	61.5% 17-44 38.6%
			4 5:04		Rebound by Profitt, Tim	0-2	Tot-2 0-4 Tot-20
			4 5:00		20 ft Right Angle Jump shot by Williams, Glenn, missed	1-6	16.6% 17-45 37.7%
D-1	Tot-1	D-5 Tot-28	4 5:00				
		Rebound by TEAM	4 5:00				
		Sub In: Martin, Kenneth Out: Howard, Todd					

Laurel County "Cardinals" vs Ballard "Bruins"
2nd Half Play by Play

Tip off at on 03/16/88 at STATE TOURNEY, LOUISVILLE
Produced by the K.H.S.A.A. Stat Crew with FINAL III™

PAGE : 1

Player	Team	Ballard	Time	Score	Laurel County	Player	Team
McDeffie, Eric		Martin, Kenneth, Gathright, Eric, Bell, Mark, Houston, Allen			Hill, Tim, Profitt, Tim, Daley, Mark, Williams, Glenn, Elza, Kyle		
					Ball to Cardinals		
8-11	72.7%	16-26 61.5%					
		Shot by Houston, Allen	3 6:57	*41-18			
			3 6:29	41-20*	7 ft Lane Jump shot by Hill, Tim	3-6	50.0% 8-25 32.0%
9-12	75.0%	17-27 62.9%					
		13 ft Left Angle Jump shot by Houston, Allen	3 6:15	*43-20			
1		3 Assist by Martin, Kenneth					
			3 5:59	43-22*	13 ft Right Side Jump shot by Hill, Tim	4-7	57.1% 9-26 34.6%
					Assist by Daley, Mark	1	2
			3 4:54	43-24*	12 ft Lane Jump shot by Hill, Tim	5-8	62.5% 10-29 34.4%
					Assist by Elza, Kyle	1	3
4-6	66.6%	18-32 56.2%					
		0 ft Lane Driving by Bell, Mark	3 4:12	*45-24			
1		1 Foul on Martin, Kenneth	3 4:01				
			3 4:01		Sub In: Douglas, Kent Out: Daley, Mark		
3		2 Foul on Gathright, Eric	3 3:51				
			3 3:51	45-26*	6 ft Lane Turnaround by Douglas, Kent	1-2	50.0% 11-30 36.6%
			3 3:51	45-27*	Douglas, Kent, 1 Free Throw made	1-1	100% 2-3 66.6%
		Sub In: Baxter, Matt Out: Gathright, Eric	3 3:51				
			3 3:33		Foul on Elza, Kyle	1	1
2		3 Foul on Martin, Kenneth	3 2:51				
			3 2:46	45-29*	4 ft Lane Bank by Profitt, Tim	5-9	55.5% 12-31 38.7%
					Assist by Douglas, Kent	1	4
5-8	62.5%	19-35 54.2%					
		2 ft Lane Jump shot by Bell, Mark	3 2:28	45-31*	14 ft Lane Jump shot by Williams, Glenn	1-5	20.0% 13-32 40.6%
6-9	66.6%	20-36 55.5%					
		4 ft Lane SHOT Off Fast Break by Bell, Mark	3 2:02	*47-31			
1		4 Foul on Houston, Allen	3 1:34	*49-31			
		Sub In: Howard, Todd Out: McDeffie, Eric	3 1:20				
			3 1:20				
			3 1:20	49-33*	7 ft Lane Turnaround by Hill, Tim	6-9	66.6% 14-34 41.1%
			3 1:02		Foul on Elza, Kyle	2	2
4-11	36.3%	21-38 55.2%					
		4 ft Lane Follow by Martin, Kenneth	3 0:37	*51-33			
			3 0:21	51-35*	12 ft Right Base Line Jump shot by Hill, Tim	7-10	70.0% 15-36 41.6%
					Assist by Douglas, Kent	2	5
10-13	76.9%	22-39 56.4%					
		17 ft Right Side Jump shot by Houston, Allen	3 0:05	*53-35			

BOX SCORE: * OFFICIAL FIRST HALF * Date: 03-16-88 Site: STATE TOURNEY, LOUISVILLE Attendance:

Team: Laurel County

NO.	NAME	TOTAL FG		3-POINT		FT	FTA	REB			PF	TP	A	TO	BLK	S	MIN
		FG	FGA	FG	FGA			O	D	T							
34	Hill, Tim	2	5	0	0	1	2	0	3	3	1	5	0	0	0	0	16
41	Profitt, Tim	4	6	3	3	0	0	3	0	3	2	11	0	0	0	0	16
55	Daley, Mark	1	2	0	0	0	0	0	0	0	1	2	0	0	0	0	16
12	Williams, Glenn	0	3	0	0	0	0	0	1	1	0	0	1	7	0	0	16
14	Elza, Kyle	0	4	0	0	0	0	0	0	0	0	0	0	2	0	0	16
10	Broughton, Chas	0	1	0	0	0	0	0	1	1	0	0	0	1	0	0	0
31	Price, James	0	0	0	0	0	0	0	1	1	0	0	0	0	0	0	0
51	Douglas, Kent	0	1	0	0	0	0	0	0	0	0	0	0	0	0	0	0
TEAM																	
TOTALS		7	22	3	3	1	2	3	7	10	4	18	1	10	0	0	80
Percentages:		HALF-----		FG	7/ 22	31.8%	3-PT.	3/ 7	100.0%	FT	1/ 2	50.0%	Deadball Rebounds		0/ 0	0.0%	
		Period 1		4/ 9	44.4%			2/ 2	100.0%		0/ 0	0.0%			0/ 0	0.0%	
		Period 2		3/ 13	23.1%			1/ 1	100.0%		1/ 2	50.0%			1/ 2	50.0%	

Team: Ballard

NO.	NAME	TOTAL FG		3-POINT		FT	FTA	REB			PF	TP	A	TO	BLK	S	MIN
		FG	FGA	FG	FGA			O	D	T							
11	McDeffie, Eric	2	3	1	1	0	0	0	0	0	0	5	0	0	0	1	16
21	Martin, Kenneth	3	7	0	0	3	3	2	6	8	0	9	0	0	0	0	16
45	Gathright, Eric	0	0	0	0	0	0	0	2	2	2	0	0	1	0	0	16
10	Bell, Mark	3	4	0	0	0	1	1	0	1	1	6	1	3	0	0	16
20	Houston, Allen	7	10	4	5	1	1	0	5	5	0	19	1	0	0	1	16
34	Baxter, Matt	0	0	0	0	0	0	0	0	0	0	0	0	1	0	0	0
TEAM																	
TOTALS		15	24	5	6	4	5	3	13	16	3	39	2	5	0	2	80
Percentages:		HALF-----		FG	15/ 24	62.5%	3-PT.	5/ 6	83.3%	FT	4/ 5	80.0%	Deadball Rebounds		1/ 2	50.0%	
		Period 1		7/ 14	50.0%			0/ 1	0.0%		1/ 2	50.0%			1/ 2	50.0%	
		Period 2		8/ 10	80.0%			5/ 5	100.0%		3/ 3	100.0%			3/ 3	100.0%	

OFFICIALS: RANDALL CURRY, BARRY BARNES

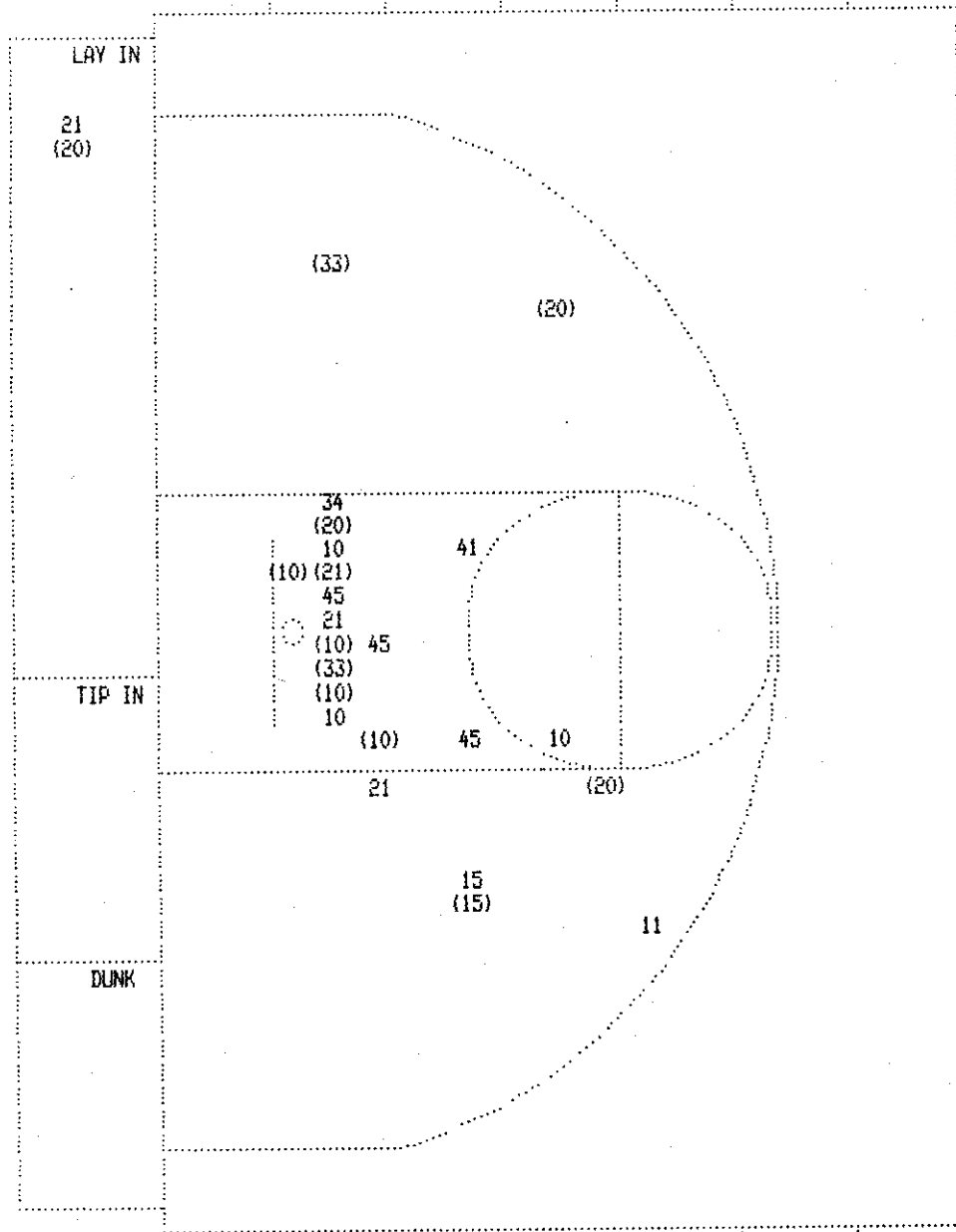
SCORE BY PERIODS

Technical: None

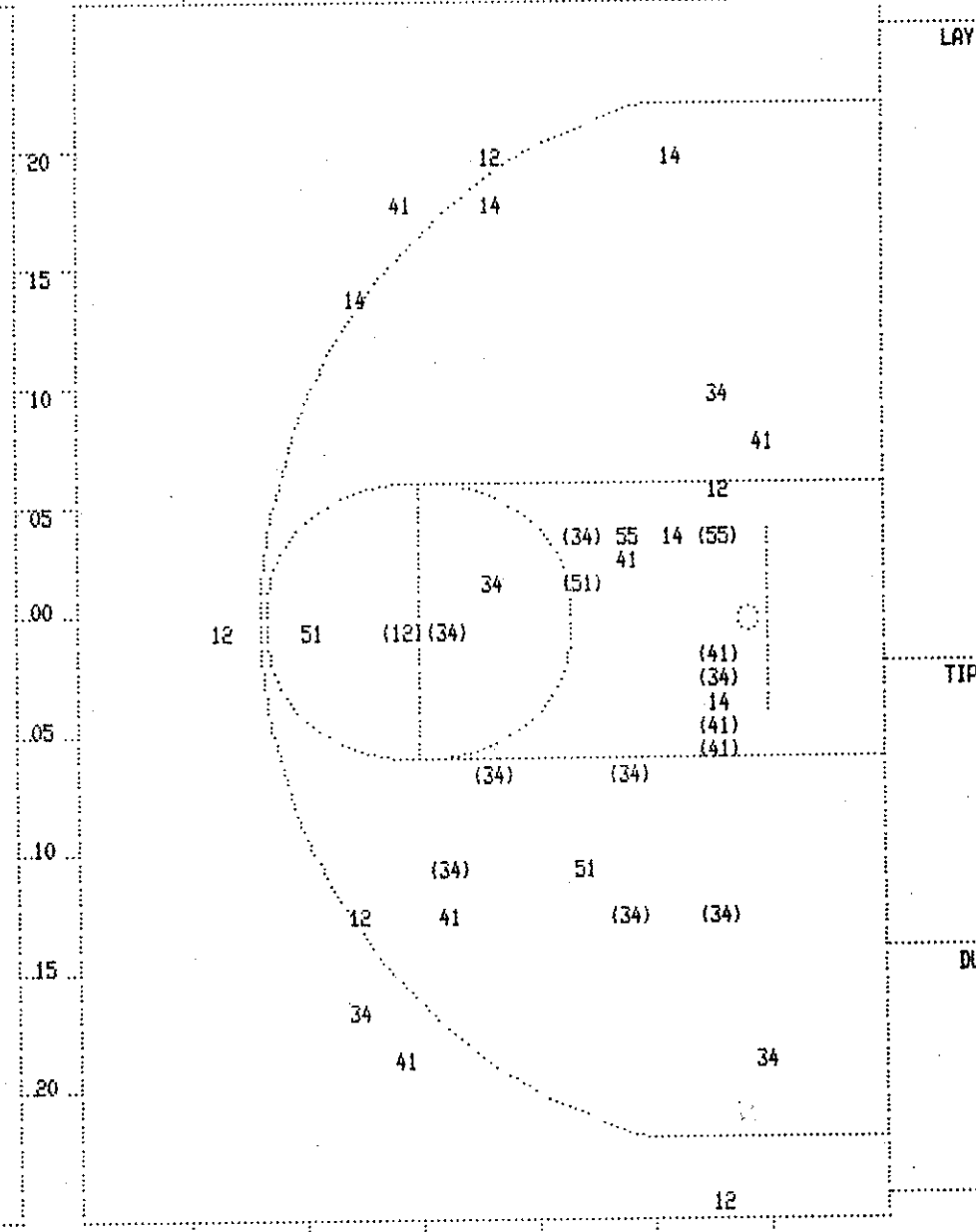
Laurel County 10 8 = 18
Ballard 15 24 = 39

Produced by the K.H.S.A.A. Stat Crew with FINAL III**

SECOND HALF SHOT CHART Produced by the K.H.S.A.A. Stat Crew with FINAL III™



Ballard				Player			
Player				Player			
11 - McDeffie,	0 / 1	0.0%		15 - Howard, To	1 / 2	50.0%	
21 - Martin, Ke	1 / 4	25.0%		33 - Gardner, S	2 / 2	100.0%	
45 - Gathright,	0 / 3	0.0%		34 - Baxter, Ma	0 / 1	0.0%	
10 - Bell, Mark	4 / 7	57.1%		41 - Spencer, T	0 / 1	0.0%	
20 - Houston, A	4 / 4	100.0%					
Layups	1 - 9 Ft			Over 15 Ft	3 Pointers	Total	
	3 / 7			5 / 7	7 / 7	13 / 13	



Laurel County				Player			
Player				Player			
34 - Hill, Tim	8 / 12	66.6%		51 - Douglas, K	1 / 3	33.3%	
41 - Profitt, T	3 / 8	37.5%					
55 - Daley, Mar	1 / 2	50.0%					
12 - Williams,	1 / 6	16.6%					
14 - Elza, Kyle	0 / 5	0.0%					
Layups	1 - 9 Ft			Over 15 Ft	3 Pointers	Total	
	3 / 13			5 / 8	1 / 5	6 / 10	14 / 36